



Queen Annes Grove, London, W4
Guide Price £2,850,000

WHITMAN & CO.
SALES · LETTINGS · COMMERCIAL



An outstanding Grade II listed period home designed by E. J. May, boasting a 75' west-facing garden and double garage, ideally located on this premier residential road in the heart of the Bedford Park Conservation Area. The accommodation comprises four/five bedrooms, two bathrooms, a roof terrace, a large entrance hall, two elegant reception rooms, a cloakroom, and a 26' kitchen/breakfast room.

The plot extends to Marlborough Crescent at the rear, providing garage access, which benefits from planning consent for the demolition of the existing garage/workshop and its replacement by a brick-built habitable studio.

Situated within close proximity of Turnham Green Tube Station and the extensive range of shops, bars, and restaurants on Chiswick High Road. No onward chain.



Queen Anne's Grove, W4

Approximate gross internal area

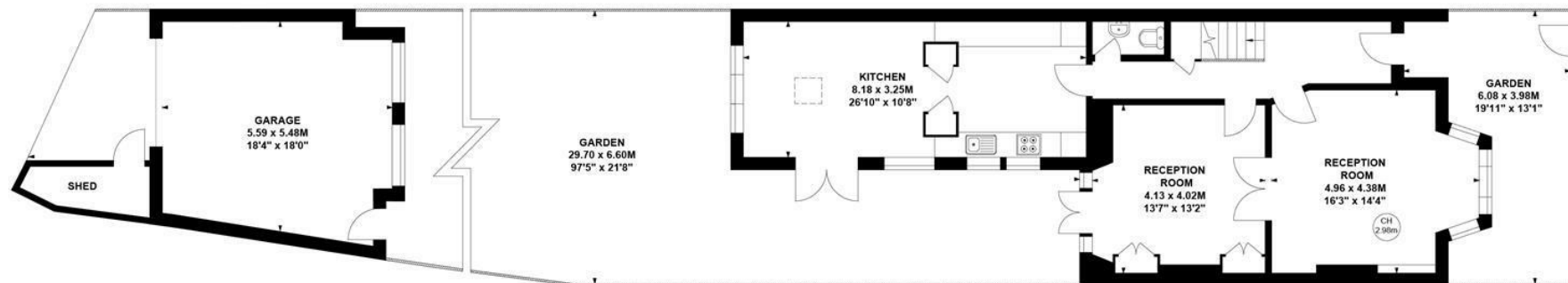
223.93 sq m / 2410 sq ft

(Including Garage)

Garage : 28.08 sq m / 302 sq ft

Key :

CH - Ceiling Height



Not to scale, for guidance only and must not be relied upon as a statement of fact.

All measurements and areas are approximate only

- Spectacular Grade II listed house
- Bedford Park Conservation Area
- Planning for a habitable studio

- 75' west facing garden
- Host of original features
- No onward chain

Tenure - Freehold
Local Authority - Ealing
Council Tax - Band H

